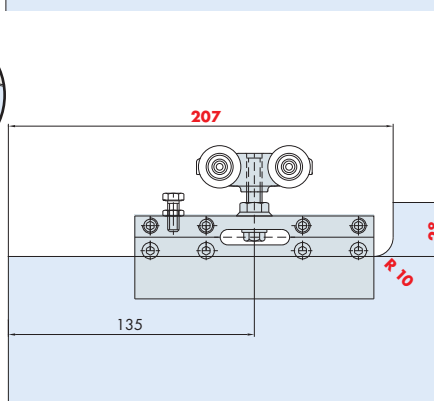
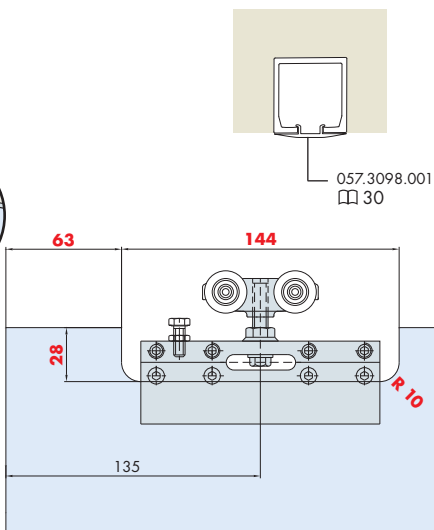
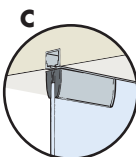
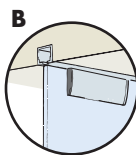
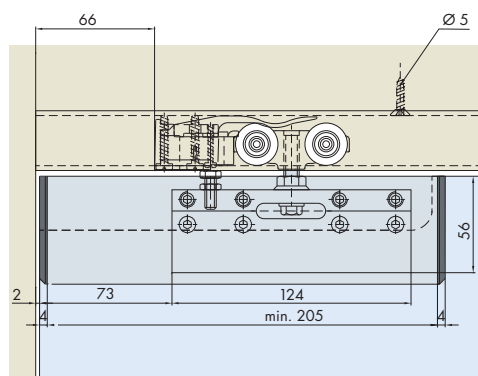
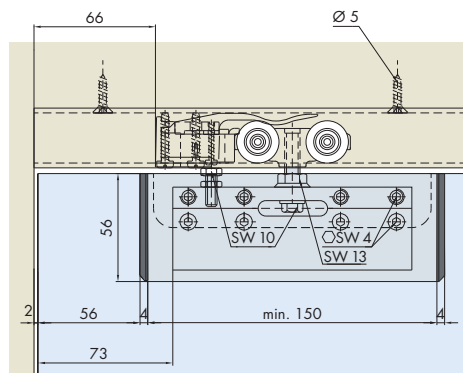
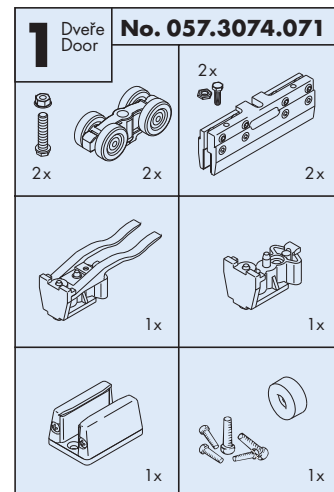


Příklady montáže s opracováním skla

Mounting examples with machining of the glass



Sady/Sets



Hmotnost dveří / Door weights 33

Příslušenství / Accessories

Kolejnice, hliník děrovaný perforovaný

Running track, aluminium pre-drilled

Gr./Size

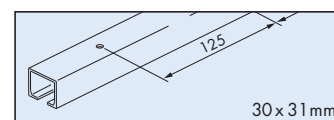
Art. No.

1700 mm 057.3016.170

2000 mm 057.3016.200

2500 mm 057.3016.250

6000 mm 057.3016.600



Kluzná kolejnice, eloxovaný hliník, perforovaná

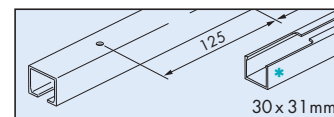
Running track, aluminium anodized, pre-drilled

2000 mm 057.3016.201

2500 mm 057.3016.251

2500 mm 057.3016.256*

6000 mm 057.3016.601

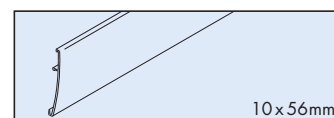


Klipová clona k upínacímu botce, eloxovaný hliník

Clip panel for clamping shoe, aluminium anodized

2500 mm 057.3039.250

6000 mm 057.3039.600

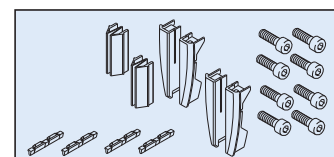


Sada koncových krytek k lištám, plast antracitová

End cap set for panels, plastic anthracite

057.3061.072

2 x

A
B/C/D

Zpracování dveří = červená čísla / Dimensions and drillings for door = red numbers

*Montážní otvor a krytka / Assembly opening and cover cap :

Speciální příslušenství / Special accessories :

30

Technické údaje / Technical data :

33